

**Country Profile on
Disability**

THE REPUBLIC OF PARAGUAY

**March 2002
Japan International Cooperation Agency
Planning and Evaluation Department**

This study has been prepared using data that was available on-site. JICA bears no responsibility for the accuracy of the data contained herewith.

Country Profile on Disability
Paraguay

Table of Contents

Abbreviations.....	iii
1. Basic Profile.....	1
1-1. Basic Indicators.....	1
1-2. Indicators on Disability.....	3
2. Issues in Disability.....	8
2-1. Definition of Disability in Paraguay.....	8
2-2. Current Situation.....	8
2-3. Documentation and Survey on Disability.....	9
3. Administration and Policy on Disability.....	12
3-1. Administration on Disability.....	12
3-2. Laws and Regulations on Disability.....	13
3-3. Policies on Disability.....	16
3-4. Measures on Disability.....	18
3-5. Experts and Workers in the Field of Disability.....	22
4. Disability-related Organizations and Activities.....	24
4-1. Activities by Disability-related Organizations.....	24
4-2. Cooperation Projects on Disability Organized by International and Other Donners.....	25
5. References.....	27

Figures

Figure 1.	Type of Disability in 1992	3
Figure 2.	Number of Persons with Disabilities by Age Category in 1992	4
Figure 3.	Distribution of Persons with Disabilities by Areas in 1992.....	4
Figure 4.	Types of Disabilities in Urban and Rural Areas	5
Figure 5.	Ratio of Male and Female with Disabilities in 1990	5
Figure 6.	Types of Disabilities (Women)	7

Abbreviations

ARIFA	Physically Impaired Rehabilitation Association of Asunción
CBR	Community-Based Rehabilitation
DIBEN	Paraguayan Directorate of Public Welfare and Social Assistance
DREDF	Disability Rights Education and Defense Fund
IDB	Inter-American Development Bank
INPRO	National Institution of Protection for Exceptional People
ILO	International Labour Organization
IPS	Social Welfare Institute
MCH	Maternal and Child health
NGO	Non-governmental Organization
PWDs	Persons with disabilities
UNDP	United Nations Development Program
UNESCO	United National Educational, Scientific, and Cultural Organization
USAID	United States Agency for International Development
WHO	World Health Organization

1. Basic Profile

1-1. Basic Indicators

Public Sector Expenditure¹

Health	2.6%	1996-98 年
Education	4.0%	1997 年
Social welfare	N/A	
Defense	1.3%	1997 年

Population¹

Population (total)	5.5 million	2000
% of women	49.6%	2000
% of urban population	55%	1999
Life Expectancy ² (total)	69.9	1999
Male	67.8	1999
Female	72.3	1999

Medical Care

Medical care personnel ²		
Population/Doctor	909	1990-99
Population/Nurse & midwife	10,000	1992-95

¹ World Bank. World Development Report 2000-2001

² UNDP. Human Development Report 2001

Education

Education system ³		
Primary education	6 year	
Compulsory education	6 year	
Adult literacy rate ¹		
Male	94%	1998
Female	91%	1998
Enrollment ratio ³		
Primary education (Net enrollment ratio)		
Total	96%	1997
Male	91%	1995-99
Female	92%	1995-99
Primary education ⁴ (Gross enrollment ratio)		
Total	111%	1997
Male	112%	1997
Female	109%	1997
Secondary education (Net enrollment ratio)		
Total	61%	1997
Male	37%	1996
Female	39%	1996
Higher education (Gross enrollment ratio)		
Total	10.3%	1996
Male	10%	1996
Female	10.7%	1996

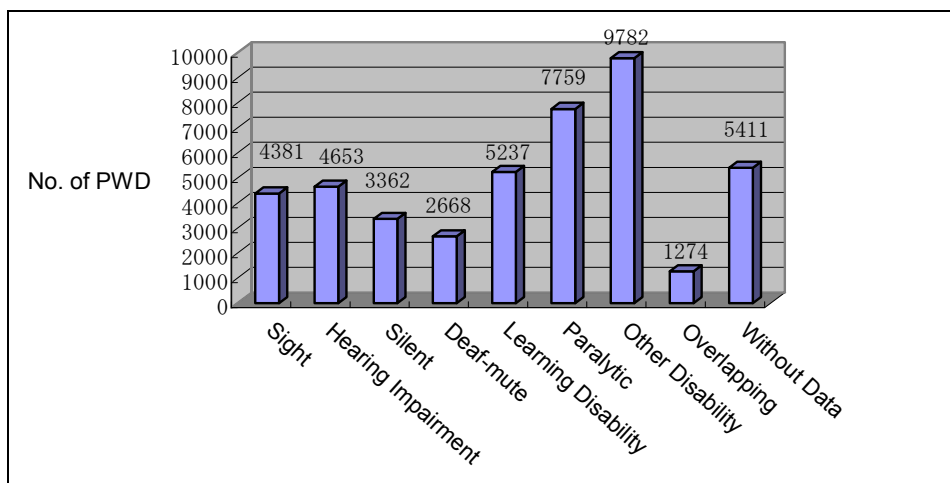
³ UNESCO. Statistical Yearbook 1999

⁴ USAID ESDS. GED2000 Retrieved February 21, 2002, from <http://quesdb.cdie.org/ged/index.html>

1-2. Indicators on Disability

Disability-specific Data

Figure 1. Type of Disability in 1992



Source: Head Office of Statistics, National Census of Population and Housing 1992.

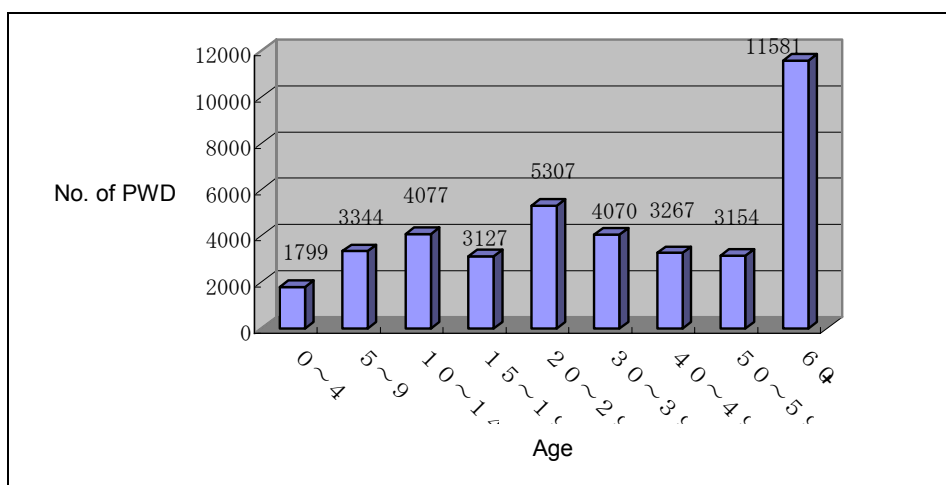
**"Other Disability" includes those with low vision, poor hearing ability, behavior deficiency, and not specified.

***"Overlapping" includes those with more than one impairment, but excludes persons with hearing-speech impairment.

****"No Data" includes persons who don't declare type of impairment.

Age-specific Data

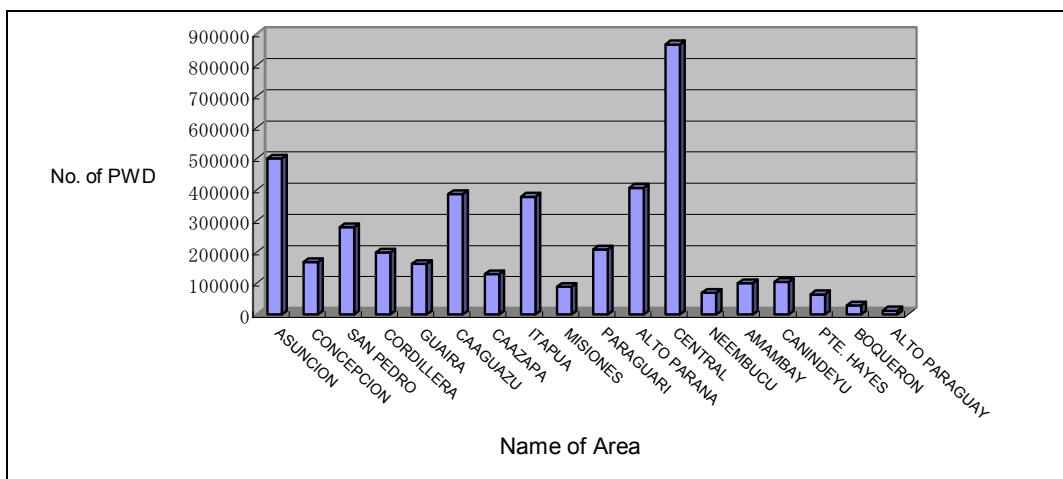
Figure 2. Number of Persons with Disabilities by Age Category in 1992



Source: Head Office of Statistics, National Census of Population and Housing 1992.

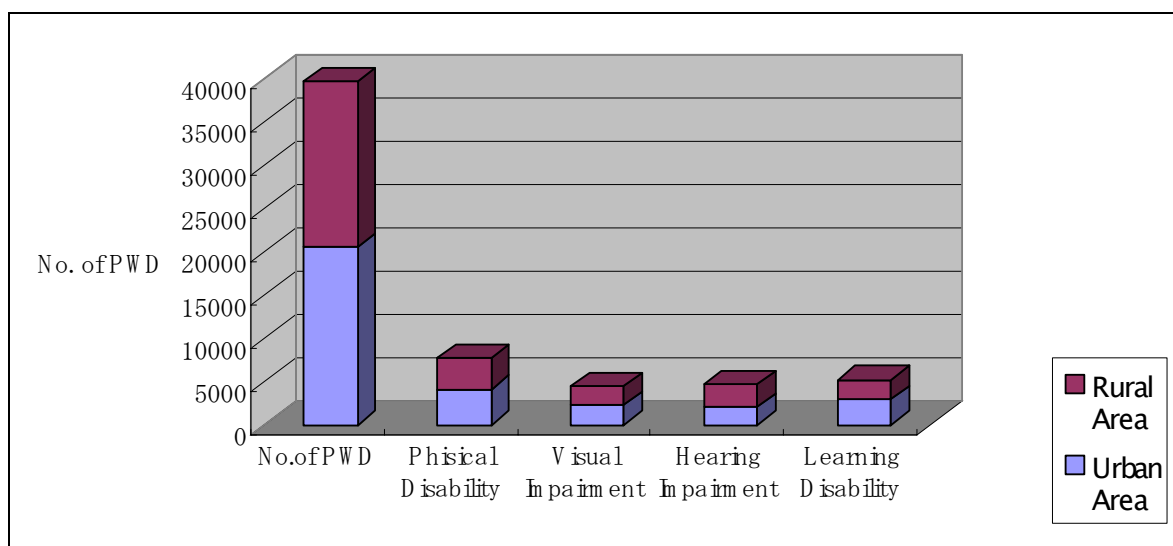
Area-specific Data

Figure 3. Distribution of Persons with Disabilities by Areas in 1992



Source: Head Office of Statistics, National Census of Population and Housing 1992.

Figure 4. Types of Disabilities in Urban and Rural Areas⁵



Source: Head Office of Statistics, National Census of Population and Housing 1992.

Grade-specific Data

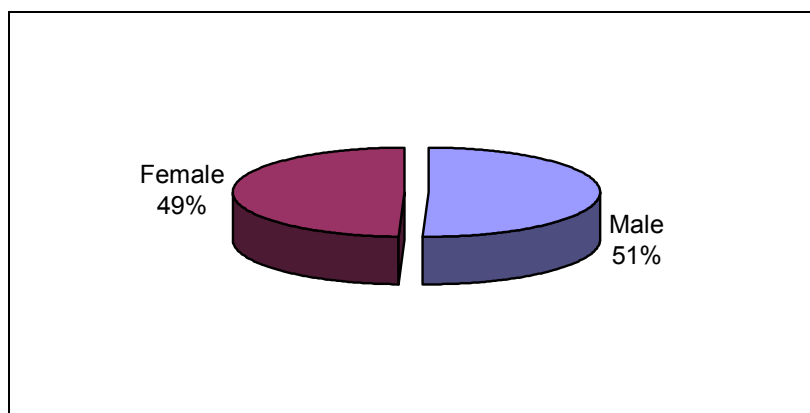
N/a

Cause-specific Data

N/a

Gender-specific Data

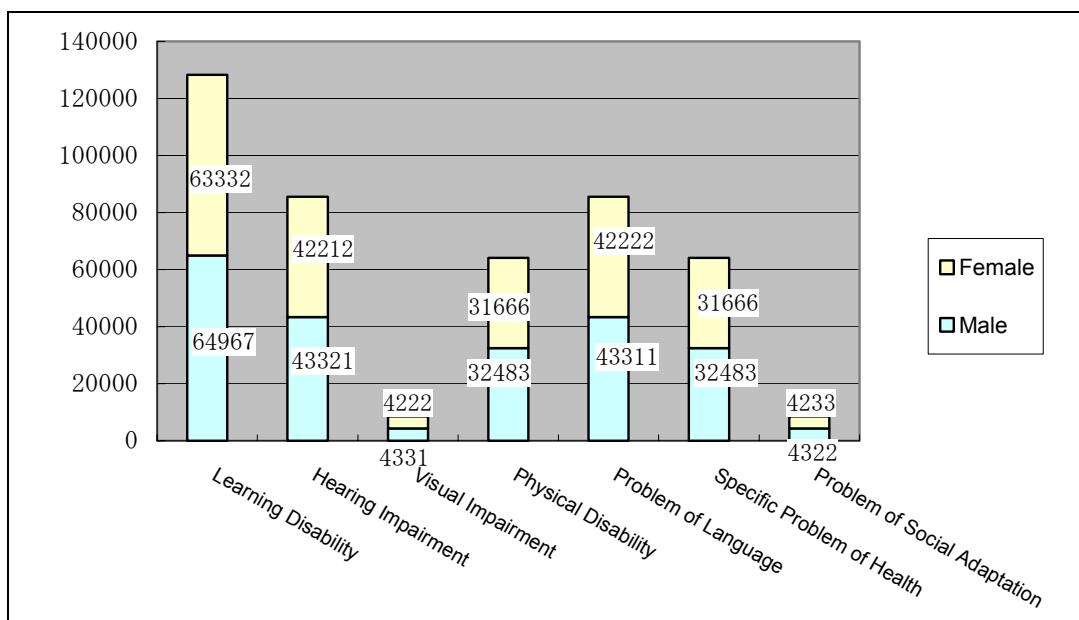
Figure 5. Ratio of Male and Female with Disabilities in 1990



⁵ There is no data on number of persons with psychiatric, multiple, or other disabilities, nor the definition of areas.

Source: Proposal of Integral Action Plan for People with Disability (1992-1995).

Figure 6. Types of Disabilities (1990)



Source: Proposal of Integral Action Plan for People with Disability (1992-1995).

2. Issues in Disability

2-1. Definition of Disability in Paraguay

Paraguay's definition of persons with disabilities is based on the WHO's definition of persons with disabilities. The Law 780, Article 6 defines them as exceptional, beneficiary or deficient persons who suffer a decrease of their mental or physical ability that affects their possibilities of self-sufficiency, learning or work, due to congenital or acquired causes.

2-2. Current Situation

Number of Persons with Disabilities

At the moment an accurate number of persons with disabilities in Paraguay and the distribution of persons with disabilities by age categories is unknown. However the majority of persons with disabilities in the country are children and youth, and the number of persons with disabilities is increasing due to the high rate of increase in population and lack of strategies for disability prevention, especially for primary prevention.

Geographical distribution of Persons with Disabilities

There is no exact information on the distribution of persons with disabilities, although the 1992 Census provides a reference. Persons with disabilities and their families are however considered to have mobility depending on their economic condition or availability of economic resources. In general, most of persons with disabilities are in the rural sector, with greater concentrations in large cities and the capital.

Living condition of Persons with Disabilities and their families (situation of well being or poverty)

There is a lack of precise and updated information about the living conditions of persons with disabilities and their families, but the present available data indicates that persons with disabilities and their families lack even the most minimal needs⁶.

Health Sector

The current National Health Plan, elaborated by the National Council of Health, does not

⁶ Reference: A study of the family situation with regard to the level of basic needs satisfaction, 1995

include issues related to social welfare for persons with disabilities. The human resource action strategy does not contemplate disability training. The current health sector has difficulties meeting persons with disabilities needs and demands.

Problems faced by Persons with Disabilities

Familial problems: Families with persons with disabilities face discrimination in society and do not receive outside help in times of crisis.

Problems related to persons with disabilities: Persons with disabilities face present and future life insecurity, the risk of abandonment and very limited familial or persons with disabilities organizational support to realize the right to study, work, form their own family, among other things.

Problems related to the community: Changes in attitudes and social structure is needed persons with disabilities to participate, integrate or coexist within society.

2-3. Documentation and Survey on Disability

Information collection

Information presented in projects is generally based on subjective criteria and the quality of statistical data is low due to a lack of investment. As a result, it is necessary to improve the capacity of those people responsible for data registration and to cover survey preparation, realization and diffusion costs.

National Census

【Title】	National Census of Population and Housing
【Last published】	1992 (every 10 years, the next will be in 2002)
【Items regarding Disability】	Includes demographic data related to Persons with Disabilities.

Other Surveys

【Title】	N/A ⁷ (Reference: Proposal of Integral Action Plan for People with Disability: 1992-1995)
【Last published】	1987
【Items regarding Disability】	
<p>A survey carried out by the Ministry of Education and Culture (Division of Special Education) and the United States Agency for International Development (USAID), with the purpose of identifying persons with disabilities, detecting children and youth with disabilities, and learning about parents' and community leaders' attitudes towards persons with disabilities.</p> <p>The survey revealed:</p> <ul style="list-style-type: none"> -The main types of disability in Paraguay were mental disability and hearing impairment -Assistance for persons with disabilities was insufficient, mainly because of the lack of regional services and resources. -Parents, teachers and community leaders had a sensitive attitude towards persons with disabilities' desire to integrate socially and labor -wise. 	

【Title】	N/A ⁸ (Reference: Proposal of Integral Action Plan for People with Disability: 1992-1995)
【Last published】	1990
【Items regarding Disability】	
<p>A survey prepared by the Physically Impaired Rehabilitation Association of Asunción (ARIFA), regarding international and national statistical data of persons with disabilities by types of disability and gender.</p> <p>The survey found that 10 % of the Paraguayan population suffered from some kind of disability.</p>	

【Title】	N/A ⁹ (Reference: Proposal of Integral Action Plan for People with Disability: 1992-1995)
【Last published】	N/A

⁷ See the summary of the survey for table 7 of Dr. Escobar, J. Daniel. *Study of Country Profile in the Area of Assistance for People with Disabilities in Paraguay*. 2000.

⁸ See the summary of the survey for table 8 of Dr. Escobar, J. Daniel. *Study of Country Profile in the Area of Assistance for People with Disabilities in Paraguay*. 2000.

⁹ See the summary of the survey for table 9 of Dr. Escobar, J. Daniel. *Study of Country Profile in the Area of Assistance for People with Disabilities in Paraguay*. 2000.

【Items regarding Disability】

A survey carried by the Inter-American Institute of Children and the rehabilitation institute, APADEM-TELETÓN, on prevalence of disabilities in rural areas. The variables used in this survey were physical, sensorial and mental signs and symptoms in rural areas with less than 2,000 habitants were surveyed. The data was useful for decision-making and program implementation for the decentralization process of the country, which allowed an integrated and low cost service for persons with disabilities.

The survey also found a high percentage of persons with disabilities in Paraguay between the ages of 6 and 17 and this result suggested the possibility that persons with disabilities were not conscious of their disabilities until their entrance into the school system. Low levels of education, lack of attention and geographical inaccessibility to social services as well as the lack of information on disability issues were thought to be the causes of this situation.

Public and private institutions have conducted several studies that cover specific cases, or limited geographical areas, or persons with disabilities assisted in the institutions. However, there is a great diversity on the classification of disabilities in these studies causing difficulties in unifying information on persons with disabilities.

3. Administration and Policy on Disability

3-1. Administration on Disability

See Annex 1 for list of governmental organizations

There is no social welfare system for persons with disabilities at the national level or regional level.

Central Government

【Organizational chart】

N/A

【Disability-related Central Governmental Organizations】

【Name】	【Description】
Ministry of Public Health and Social Welfare	Social welfare programs and actions are integrated into the National Health System that the General Office of Social Welfare of the Ministry of Public Health and Social Welfare organizes. However, the General Office currently puts a greater emphasis on social welfare for minors and people of the third age.
Ministry of Education and Culture	The Department of Special Education under the Ministry of Education and Culture is required to ¹⁰ : a) Establish policies, objectives, and special education strategies according to the general delineation of education. b) Conduct technical-administrative activities of special education at the national level. c) Conduct intra and inter-sector coordination with other educational sectors for attention to persons with special educational needs within the framework of the General Education System.
National Institute of Protection for Exceptional People (INPRO) ¹¹	A dependent organism of the Ministry of Education and Culture, with its own budget from the General Budget of Expenses of the Nation, donations and help from international cooperation organizations.

Local Government

【Organizational chart】

¹⁰ Ministry of Education and Culture Website. (Retrieved March 25, 2002 from <http://www2.paraguaygobierno.gov.py/mec/>)

¹¹ For the organizational structure of INPRO, see Dr. Escobar, J. Daniel. *Study of Country Profile in the Area of Assistance for People with Disabilities in Paraguay*. 2000. p.24 and p.45.

N/A

【Disability-related Local Governmental Organizations】

【Name】	【Description】
Secretary of Social Action	Programs and actions related to persons with disabilities are included in the plans of these secretaries, which are under each departmental government and municipalities. Support for the programs and activities by the central government is provided.
Secretary of Education	
Secretary of Health	

3-2. Laws and Regulations on Disability

*See Annex 3 for other laws

【Title】	National Constitution of the Republic of Paraguay
【Year legislated】	1992
【Purpose】	To provide welfare, anti-discrimination measures, and to protect the rights of Paraguayan inhabitants

【Description】

Includes articles which specifically mention Persons with Disabilities:

Title II (Rights, Duties and Guarantees), Chapter I (Life and Environment), Section I (Life), Article 6 (Quality of Life) declares that “The State will promote the quality of life through plans and policies that recognize conditioning factors, such as extreme poverty and impediments of disability or age”

Chapter III (Equality), Article 45 (Equality of People) declares, “All the inhabitants of the Republic have equal dignity and rights. Discrimination is not allowed. The State will remove obstacles and prevent the factors that maintain/support or contribute to them. The protection of unjust inequality will not be considered as discriminatory.”

Chapter IV (Rights of Family), Article 57 (Rights of Exceptional People) declares, “Exceptional persons will be guaranteed attention to their health, education, recreation, and professional training for full/complete social integration. The State will draft a policy for prevention, treatment, rehabilitation and integration of those with physical, psychic and sensorial disabilities, providing specialized care that they require. Their right to equal opportunities will be recognized, which the Constitution grants to all inhabitants of the Republic, in order to neutralize their disadvantages.”

Chapter VIII (Labor), Section I (Labor Rights), Article 87 (Non-discrimination) expresses that “Any discrimination, between workers for reasons of ethnicity, sex, age, religion, social condition and political or syndicate preference, is not allowed .The work/job of persons with physical limitations or disabilities will be specially protected.”

【Title】	Law No.780
【Year legislated】	1979
【Purpose】	To create a national institute that has normative, advisory and executive functions concerning disability in the country.

【Description】

Law establishing the National Institute for Protection of Exceptional People (INPRO).

Article 5: “The objective of INPRO will be to protect exceptional persons in an integral manner to neutralize their disadvantages and to give them opportunities to carry out an equivalent role in the community as ordinary persons, with their own effort.”

Article 7: “The protection that this law establishes will be agreed with the beneficiary as long as it exists, according to the nature or grade of their deficiency.”

Article 8: “ INPRO oversees whether the exceptional persons can fully enjoy the rights and guarantees acknowledged in the National Constitution and the Republic Laws, and it will especially:

- a) protect exceptional persons against any form of discrimination, abandonment, exploitation, and cruel or degrading treatment, which could be detrimental to their health, education or impede their harmonic development
- b) cooperate with the Ministry of Children and the Disabled (Ministerio de Menor y Incapaces) to guarantee their defense in judgment
- c) promote their material and moral well-being in an adequate form to their situation, needs and personal conditions
- d) attend to their health, education, work, qualifications or rehabilitation
- e) offer orientation and provide labor training through a planning directed towards their social adaptation
- f) oversee whether they will live with their own and substantive family, whether they will fully share social coexistence, and whether they enjoy suitable entertainment, placing persons with disabilities in specialized institutions with a family atmosphere and conditions, if necessary.

【Title】	Law No.122/90
【Year legislated】	1991
【Purpose】	To establish the rights and privileges of Persons with Disabilities

【Description】

Establishes rights and privileges for Persons with Disabilities.

Article 1: Establishes the obligation of the State to provide in favor of persons with disabilities, gratuitous means necessary for; medical, psychological, and functional attention including prosthesis and orthopedic apparatus; their social adaptation and differential education of all levels for the professional training in the intellectual and manual activities that they can carry out, including help, advice, and services for employment to assure the maximum use of their possibilities.

Article 2: Establishes an employment preference rule for persons with disabilities in public administration and decentralized entities, as well as private employers, in all activities that they can carry out.

Article 3: Taking into account all persons with disabilities needs in social and economic national surroundings.

Article 4: Obliges public transportation to reserve spaces exclusively for persons with disabilities with signs.

Article 5: Gives priority to persons with disabilities in public places such as public administration offices, banks, or public shows.

Article 6: Prohibits discriminatory treatment against persons with disabilities.

Article 7: Invalidates the second part of Article 258 of the Law 729/63 that refers to the inferior wages for apprentices and people with legally proven physical or mental disabilities.

3-3. Policies on Disability

National Development Plan

【Title】	Strategic Plan of Social Development
【Period】	1996

【Items regarding Disability】

Developed by the Secretary of Social Action of the Presidency of the Republic but awaiting medium to long-term action.

Chapter I: Social situation in Paraguay, a diagnosis of the country

Social integration and socially vulnerable groups: Problems of persons with disabilities have become increasingly recognized through increased information and awareness among individuals and the public. Private organizations have made considerable efforts to establish and provide financial support to specialized institutions. The educational reform plan also pays special attention to persons with disabilities.

Chapter V: Priority issues for Paraguayan social development.

Initiatives in employment, income, education, training, housing, social security and health are proposed for the advancement of social development.

【Title】	Government Program 1999-2003 ¹²
【Period】	1999-2003
<p>【Items regarding Disability】</p> <p>Drafted by the Technical Commission of Development, composed of representatives of the Executive and Legislative branch, political parties, and the technical support team as well as members of the Technical Secretary of Planning.</p> <p>The purpose of the program is to propose policies and measures for economic reactivation and poverty alleviation in Paraguay. It also sets expected minimum results and a strict implementation period.</p> <p>The program consists of four chapters: 1) State Reform, 2) Social Policies and Struggle against Poverty, 3) Economic Reactivation, 4) Competitiveness and Productivity.</p> <p>The second chapter includes: 1) Education, 2) Health and Nutrition, 3) Rural Establishment, 4) Woman, 5) Childhood and Youth, 6) Employment, 7) Housing¹³.</p>	

¹² The whole contents of the program can be seen on the website of the Presidency of the Republic (<http://www2.paraguaygobierno.gov.py/programadegobierno1.doc>)

¹³ For the contents of the second chapter, see Dr. Escobar, J. Daniel. *Study of Country Profile in the Area of Assistance for People with Disabilities in Paraguay*. 2000. pp.16-19

3-4. Measures on Disability

Current policies and strategies for persons with disabilities are a declaration of intentions and are not orientations or instructions for the development of clear objectives. Resources are not yet allocated to achieve the objectives, and specific plans and programs have not been put into practice. For example, the document “Proposal of Integral Behavior for People with Disabilities Plan” (1992-1995), developed by DIBEN with the support of the United Nations Programs for Development (UNDP), presented strategies and actions for integral attention to persons with disabilities, but none of them were implemented. The two documents developed by INPRO, “Politics in the Area of the Disabilities” and “Proposal of National Plan for Disabilities” have also not been published or implemented.

1. Strengthening implementation for Policy on Disability

There are many disability-related laws and policies in Paraguay, but most remain philosophies of the government, and there are reports that most items have still not been implemented. Reasons for the delay in implementation are thought to be a lack of governmental implementation capacity, funding, human resources and facilities, as well as people’s perceptions of disability. Therefore, it is necessary to focus on factors necessary to strengthen policy implementation.

2. Narrowing regional differences in disability-related welfare

Educational facilities and other disability-related facilities are concentrated in urban areas, and due to the slow pace of decentralization, there are very few public services offered in rural areas. However, as there are many persons with disabilities support organizations within the country, there are expectations for these organizations to play an important role in providing rural services. Currently, there is a lack of coordination between public organizations, so cooperation amongst these organizations, and further partnerships with the government are necessary.

Prevention, Identification and Early Intervention

【Current situation】

No information available.

【Policy/program title】	N/A
【Implementation year】	
【Description】	

Medical Services and Rehabilitation

【Current situation】

No information available.

Education

【Current situation】

Special educational services are still differentiated into types of disabilities insufficient, unequally distributed, and use old educational methods. As a result, there is an increasing number of illiterate persons with disabilities or persons with disabilities without appropriate abilities to compete in the labor market. There is also very little exchange and coordination between the regular and special education systems.

The quality of special education is low due to insufficient specialized teaching resources, appropriate materials and the concentration of educational institutions in urban areas. The slow process of decentralization contributes to the low coverage and quality of special education and has also inhibited the integration of students with disabilities into the community, especially in rural areas.

Constraints in the provision of special education has prompted the Ministry of Education and Culture, through the Special Education Office, to take an “integration and normalization” approach, and to facilitate the inclusion of children with disabilities into the regular education system. As a result, “support classes” and “integrated classes” have been expanded in common schools, with a rate of 2 children with disabilities to 3 children without disability in each classroom. Integration takes into account the type and degree of disability as well as the possibilities and needs of student with disabilities and non-disabled students, although there are no uniform criteria or goals.

【Policy/program title】	Law 1264/98 General Education Law ¹⁴
【Implementation year】	1998
【Description】	Establishes a legal educational framework.

Social Service

【Current situation】

No information available.

【Policy/program title】	Law 1860/50 ¹⁵
【Implementation year】	1956
【Description】	Created the Social Welfare Institute (IPS) and norms concerning social security.

【Policy/program title】	Law No.780
【Implementation year】	1979
【Description】	Created the National Institute for Protection of Exceptional People.

【Policy/program title】	Law No.122/90 ¹⁶
【Implementation year】	1991
【Description】	Establishes Persons with Disabilities rights and privileges.

Vocational Training and Employment Promotion Services

【Current situation】

There is no information on the situation of employment of persons with disabilities, except some data on cases of integrated labor, in the public and private sector.

Precise information on protected employment does not exist, but there is some data that people with mental disabilities carry out activities such as sewing, cooking, preparation and packing of detergent, making cardboard trays, handworks, carpentry, fabric, and painting. People with physical disabilities engage in carpentry, cooking, serigraphy, sewing, production of wheel chairs, and handworks. People with sensorial disabilities (including the hearing impaired), are

¹⁴ For the details of the law, see Dr. Escobar, J. Daniel. *Study of Country Profile in the Area of Assistance for People with Disabilities in Paraguay*. 2000. pp.14-15.

¹⁵ For the details of the law, see Dr. Escobar, J. Daniel. *Study of Country Profile in the Area of Assistance for People with Disabilities in Paraguay*. 2000. p.13

¹⁶ For the details of the law, see Dr. Escobar, J. Daniel. *Study of Country Profile in the Area of Assistance for People with Disabilities in Paraguay*. 2000. pp.11-12.

occupied with carpentry and serigraphy. Only a few of them are paid workers. Otherwise, there is no comprehensive information on persons with disabilities labor and their occupational situation nor a specific strategy for persons with disabilities employment promotion.

Despite the persons with disabilities vocational training law, information on training courses is limited, which implies that training is not being actively implemented. It is also said that there are situations where persons with disabilities employment quotas and job referral systems are not actually in place, and where wages are not paid for work. Comprehensive employment measures including technical training, job referrals, employment promotion and improving working conditions are necessary to help persons with disabilities earn a living.

【Policy/program title】	Labor Code ¹⁷
【Implementation year】	1961
【Description】 Section 10: Every worker shall be entitled to follow his/her calling and freely devote himself/herself to the occupation, employment, art or trade that suits him/her on condition that the performance thereof is lawful.	

【Policy/program title】	Law 213/93 ¹⁸
【Implementation year】	1993
【Description】 Establishes norms of employment.	

Community-based Rehabilitation (CBR)

【Current situation】

No information available.

【Policy/program title】	Social Action Program
【Implementation year】	1993-1998
【Description】 Chapter 9 Integral Rehabilitation of persons with disabilities: Persons with disabilities will be given special attention, rational and integral, observing the National Constitution, under interdisciplinary focus, which optimizes the use of resources assigned to cover its needs.	

¹⁷ Disability Rights Education and Defense Fund, Inc. (DREDF) Website. (Retrieved March 25, 2002 from <http://www.dredf.org/symposium/parag2.html>)

¹⁸ For the details of the law, see Dr. Escobar, J. Daniel. *Study of Country Profile in the Area of Assistance for People with Disabilities in Paraguay*. 2000. pp.13-14.

【Policy/program title】	National Plan for Attention to the Disability
【Implementation year】	
【Description】	The objective is to establish CBR as a primary tool for auxiliary health, trained by INPRO and local community organizations and to screen, orient and refer Persons with Disabilities to services required. Once diagnosed, treated and referred, persons with disabilities are required to cooperate in rehabilitation and social and labor integration.

Communication Tools

【Current situation】

No information available.

【Policy/program title】	
【Implementation year】	
【Description】	

3-5. Experts and Workers in the Field of Disability

There is no organized system for the training of experts and workers in the field of disability. Interest in enlarging training opportunities by academic institutions of tertiary level, especially universities, have emerged in recent years, with increasingly systematic training courses

Health Sector

【Job title】	【Training system】	【Qualification system】
Physiotherapist	5-year training course at the Faculty of Medical Science, the National University of Asunción.	Degree in kinesics and physical therapy (with thesis).
Occupational Therapist	Courses in foreign countries	N/A
Early Stimulation Technician	Courses in foreign countries	N/A
Speech and vision expert (Fonoaudiólogo)	Courses in foreign countries	N/A
Rehabilitation Nurse	Training course at the School of Infirmary (nursing), the National University of Asunción.	Degree in Infirmary (nursing)

Psychological Clinician	4-year training course at the National University of Asunción.	Degree in Psychology, 2 years more for Doctor's degree in Psychology.
Orthopaedic Technician	Courses in foreign countries.	N/A

Education Sector

【Job title】	【Training system】	【Qualification system】
Special Teacher	3-year training course and 1-year for specialization at the institutions of teacher training. (Not university level, but tertiary level)	Title of primary education, basic education teacher, or secondary education teacher.
Language Therapist	Courses in foreign countries.	N/a
Physical Education Teacher for persons with disabilities	Courses in foreign countries.	N/a
Teacher of Support	3-year training course and 1-year for specialization at the institutions of teacher training. (Not university level, but tertiary level)	Title of primary education, basic education teacher, or secondary education teacher.

Labor Sector

【Job title】	【Training system】	【Qualification system】
Labor Trainer	Course of training in service.	N/a
Instructor of Workshop	4-years training course at the Instituto Superior de Educación (Teacher training)	Title of teacher in industrial skills.

Social Welfare Sector

【Job title】	【Training system】	【Qualification system】
Social Worker	4-year training course at the School of Social Service, the National University of Asunción.	Degree in Social Worker.
Job Placement Technician	Course of training in service.	N/a
CBR Technician	Course of training in service.	N/a

4. Disability-related Organizations and Activities

4-1. Activities by Disability-related Organizations

* See Annex 1, for list of organizations

Current State of Organizations

Public and Private Organizations for Persons with Disabilities

There are a great number of organizations working on persons with disabilities issues in the country. However, there is very little coordination between organizations that have similar or equivalent functions.

Facilities, Institutions, Services of Persons with Disabilities

A large number of institutions that assist persons with disabilities are from the educational sector and are involved in special education. The majority are of the private and subsidized private sectors, concentrated in the capital or in the central department¹⁹.

There are also private rehabilitation centers or services, which assist people with physical disabilities but services are costly. . The concept of CBR is not well known in the country, though some centers implement CBR.

There are very few institutions working in professional rehabilitation, occupational training and job placement. The few that are working in this field are located in the capital and do not implement activities according to the international orientation and norms of the International Labor Organization (ILO). The training offered is geared towards the service sector or agriculture and/or cattle-raising.

These institutions or services are autonomous but isolated from other institutions, due to difficulties in establishing a cooperative service network and geographical dispersion.

Non-governmental Organizations for Persons with Disabilities

Most non-governmental organizations for persons with disabilities arise from the initiative of parents of children with disabilities. The purpose of these organizations is to offer a place of education and to provide information to parents as well as to offer attention and adequate assistance to children with disabilities. Activities in the capital have extended to other places

¹⁹ See Table 10 to 12 and Graphic 8 to 14 of Dr. Escobar, J. Daniel. *Study of Country Profile in*

within the country, and education services are being offered with government support.

There are no equivalent services to those provided by NGOs in the public sector, especially in rural areas. For this reason, many NGOs provide services for people without disabilities.

These organizations are financed through donation, the community, and subsidies from the government creating some financial instability and vulnerability to by political, economic and other factors.

Organizations of Persons with Disabilities

There are currently only three persons with disabilities organizations in the country. All of these organizations are located in the capital and do not have branches. These organizations are supported by international and national organizations and have not yet developed to their full potential. This is said to be due to management styles that focus on satisfying the personal interests of the director rather than responding to the needs of persons with disabilities.

4-2. Cooperation Projects on Disability Organized by International and Other Donors

* See Annex 2 for list of projects

Assistance by Multilateral/Bilateral Organizations and International NGOs

Assistance or financial support through multilateral and bilateral organizations are provided for specific projects, sub-projects, components of national cooperation projects or institutions that work in the field of disabilities.

Projects in which the National Institute of Protection for Exceptional People (INPRO) is involved are:

- INPRO organizational restructuring (IDB, title, period, and budget unknown)
- Provision of Equipment for Different Areas of INPRO (Spanish government, project objective to improve the quality of the INPRO attention to patients, other details unknown)

the Area of Assistance for People with Disabilities in Paraguay. 2000.

Assistance by Japan²⁰

Japan puts priority on assistance to agriculture as well as health and medical sectors, providing grant aid to the health sector since 1977. In 1997-98, the maternal and child health (MCH) center at the National University of Asunción was constructed with grant aid. In 1999, a school was built for physically disabled children and the MCH functions of the Paraguay Population Research Center were strengthened under the grassroots grant aid scheme. Project-type technical cooperation including the acceptance of trainees in Japan, as well as the dispatch of experts and volunteers has also been provided in the health and medical field.

²⁰Ministry of Foreign Affairs ODA website Retrieved from
http://www.mofa.go.jp/mofaj/gaiko/oda/00_hakusho/csa/csa_29.html

5. References

This report is edited based on the main source which was drafted by a local consultant.

Main source:

Escobar, Dr. Daniel J. *Study of Country Profile in the Area of Assistance for People with Disabilities in Paraguay*. 2000.

Other references:

- Ministry of Education and Culture Website.
(<http://www2.paraguaygobierno.gov.py/mec/>)
- The Presidency of the Republic Website.
(<http://www2.paraguaygobierno.gov.py/programadegobierno1.doc>)
- Disability Rights Education and Defense Fund, Inc. (DREDF) Website.
(<http://www.dredf.org/symposium/parag2.html>)
- Inter-American Development Bank Website.
(<http://www.iadb.org>)